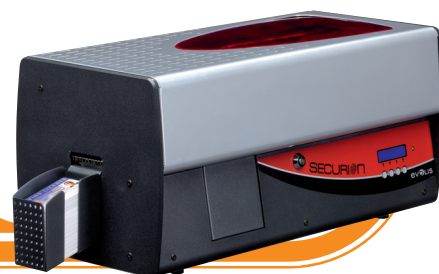


Badges that secure your **IDeas!**

Printing and laminating solution for highly secure badges

SECURION



The **Securion** is a one-stop solution for personalizing and laminating secure badges in a decentralized way. The printer seamlessly scales to meet growing concerns about security and data forgery, while greatly extending the lifespan of any card.

The printer offers dual-sided operations on both the color-printing module and the lamination station. The badge is first processed through graphical and electrical personalization. Then, a protection film, in the format of a varnish or a patch, is applied by a hot roller over the full card surface. Printing, encoding and laminating a secure badge are carried out in a single pass.

APPLICATIONS

Securion personalizes and issues durable, tamperproof ID cards:

- ID cards
- Driver's licenses
- Health insurance cards
- Access control badges



TOP QUALITY TECHNOLOGY AT AN AFFORDABLE PRICE

Securion's technology is unique: PVC cards are laminated with no damage or distortion as a result. This solution provides an attractive cost per card, greatly extends the lifespan of cards and offers foolproof security. Securion also supports the composite cards required for advanced and complex applications such as driver's licenses.

NEW AND HIGHLY SECURED LAMINATION FILMS

To cater to higher requirements in card security, Evolis offers an extended range of films, from basic varnish protection to patches with embedded holograms for maximum security.



BENEFITS

■ Secure badges that last

Securion's next-generation lamination station applies a varnish or patch-based protection film, and also manages holograms whenever required. **Securion** provides premium protection for badges, when it comes to security and durability.

■ Stunning graphics

Securion comes with the leading dual-sided and color printing module in the market for an optimum print quality.

■ Versatile encoding options

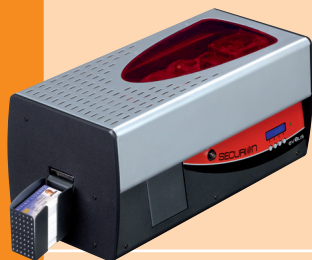
Securion supports advanced encoding options that can all be combined to cater to all encoding requirements, including the most sophisticated ones.

■ Highly secure operation

Securion deploys additional layers of security to guarantee safe operation: a central locking system that prevents access to consumables (cards and ribbons), a password-based access to the machine and a slot for a Kensington® anti-theft system.

evolis
card printers

SPECIFICATIONS



PRINT MODE

- Color printing module and laminating unit
- 300 dpi print head (11.8 dots/mm)
- USB & Ethernet TCP-IP connection
- 16 MB RAM allowing two card storage devices (front & back)
- Flip-over station for dual-sided printing or laminating
- Detachable feeder with a capacity of 100 cards (0.76 mm or 30 mil)
- Output hopper with a capacity of 100 cards (0.76 mm or 30 mil)
- Reject box for 15 cards (0.76 mm or 30 mil)
- Laminating film loading cassette
- Two-line LCD display and a status LED
- Locking system to secure access to blank cards, ribbons, films and rejected cards
- Support for a Kensington® locking system
- RoHS compliant

LAMINATION MODE

- Full card varnish and patch films
- Dual-sided lamination
- Speed range: 2 mm/s to 18 mm/s (0.08 inch/s to 0.71 inch/s)
- Temperature range: 100° C to 180° C (212° F to 356° F)

ENCODING OPTIONS & ACCESSORIES

- Encoding options (can be combined):
 - Magnetic stripe encoder ISO 7811 HiCo/LoCo or JIS2
 - Smart contact station - ISO 7816-2
 - Smart contact station and encoding unit - PC/SC, EMV 2000-1
 - Contactless encoding unit - ISO 14443A, B, ISO 15693, Mifare, DesFire, HID iCLASS
 - Other types upon request
- 100-card additional feeder: red, blue, green

RIBBON TYPES FOR THE PRINTER MODULE

- 2-panel KO black monochrome ribbon - 500 cards/roll
- 5-panel YMCKO color ribbon - 200 cards/roll
- 6-panel YMCKO-K color ribbon - 200 cards/roll
- Half-panel YMCKO color ribbon - 400 cards/roll
- Monochrome ribbons - 1,000 cards/roll (black, red, green, blue, white, gold and silver)

FILM TYPES FOR THE LAMINATION MODULE

- Generic thin holographic overlay film, full card - 350 and 400 cards/roll
- Clear patch 1 mil film - 200 cards/roll
- Clear patch 0.5 mil film - 200 cards/roll
- Alternate patch Front/ Back 0.5 and 1.0 mil - 100 cards/roll
- Special patches and thin overlay films upon request: holograms, security inks, custom cutting

PRINTING AND LAMINATING SPEED

- YMCK-K, 1.0 mil patch single-side - 85 to 105 cards/hour
- YMCK, 1.0 mil patch single-side - 95 to 120 cards/hour

CARD FORMAT

- ISO CR-80 - ISO 7810 (53.98 mm x 85.60 mm - 3.375" x 2.125")

CARD TYPE

- All PVC, Composite PVC cards
- Lamination on regular PVC card, recommended with 0.5 mil patch or thin varnish

CARD THICKNESS

- From 0.25 mm (10 mil) to 1 mm (40 mil)
- No lamination under 0.50 mm (20 mil), recommended from 0.76 mm (30 mil min.)

RESIDENT FONTS

- Arial 100, Arial bold 100
- Barcode - Code 39, 2/5 interleaved, Code 128, EAN13

SUPPORTED PLATFORMS

- Windows™ XP and Vista 32 & 64 bits
- Other Windows™ versions, Macintosh™ OS X, Linux upon request

SUPPLIED SOFTWARE

- eMedia Card Designer Software for designing and editing badges (30-day trial version):
 - Compatible with Windows™ XP, Server 2003 and Vista 32 & 64 bits
 - Connection to Microsoft™ Excel databases

INTERFACE

- USB and Ethernet TCP-IP (USB cable supplied)

PRINTER FORM FACTOR

- Without card hopper: 274.64 mm (10.81") (H) x 562.70 mm (22.15") (L) x 262.16 mm (10.32") (W)
- With card hopper: 274.64 mm (10.81") (H) x 658.20 mm (25.91") (L) x 262.16 mm (10.32") (W)

PRINTER WEIGHT

- 15.4 Kg (33.15 Lbs)

POWER SUPPLY

- Power supply: 100-240 V AC, 50-60 Hz, 2 A
- Printer: 24 V DC, 6.25 A

ENVIRONMENTAL CONDITIONS

- Min/Max operating temperature: 15° / 30° C (59° / 86° F)
- Humidity: 20% to 65% non-condensing
- Min/Max storage temperature: -5° / +70° C (23° / 158° F)
- Storage humidity: 20% to 70% non-condensing
- Operating ventilation: free air

WARRANTY

- 2 years (printer, lamination module, print head and lamination hot roller), or 100,000 inserted cards, whichever comes first¹

¹ Subject to observance of specific conditions and use of Evolis genuine consumables.

EUROPE, MIDDLE-EAST, AFRICA

Evolis Card Printer · 14, avenue de la Fontaine · Z.I. Angers Beaucoûzé · 49070 Beaucoûzé · France
Tel: + 33 (0) 241 367 606 · Fax: + 33 (0) 241 367 612 · info@evolis.com

AMERICAS · Evolis Inc. · 3201 West Commercial Boulevard · Suite 110 · Fort Lauderdale
FL 33309 · USA · Tel: +1 954 777 9262 · Fax: +1 954 777 9267 · evolisin@evolis.com

ASIA-PACIFIC · Evolis Asia Pte Ltd · Singapore · evolisasia@evolis.com

CHINA · Evolis · Sales office · Shenzhen · infochina@evolis.com

JAPAN · Evolis · Representative office · Tokyo · infojapan@evolis.com

www.evolis.com

evolis
card printers

Legacy Technology Services

We Rent & Sell All Types Of Barcode Equipment

Call now to talk to an expert

866-271-9891

www.LegacyGlobal.com

Some brands we carry



MOTOROLA

Intermec

DATALOGIC™

Honeywell

EQUINOX
PAYMENTS



About us

- Legacy Technology Services is a leading nationwide provider of mobile computing, barcode, printers and point of sale equipment and services.
- For over a decade, thousands of clients across North America have trusted us to provide equipment from leading manufacturers backed by the services to support them.

Latest Hardware from top manufacturers

- Legacy handles virtually every major manufacturer of mobile computing, barcoding and point of sale equipment.

Expert Repair and Maintenance services

- Legacy is one of the best repair facilities in North America

Discontinued product sourcing

- They don't make it anymore? Our inventory also includes manufacturer close-outs and discontinued equipment to support our clients legacy infrastructure.

Trade-in and Disposal services

- That old equipment laying around your facility may still have some value. Legacy routinely purchases equipment from our clients around the globe.
 - Data destruction
 - Hardware disposal
 - Auditing services

Dedicated client account team

- Dedicated, highly trained account managers are here to answer all your questions and provide top notch service.

Equipment rental services

- Sometimes renting is a better solution, Legacy's huge rental inventory provides the equipment you need for temporary needs and projects.



Legacy, Inc.

160 West Road,
Ellington, CT 06029

Toll Free: 866-271-9891

Fax: 888-522-4684